



APPLICATION DATA SHEET

BluInventory

DESCRIPTION

In any organization knowing the stock levels are of huge importance since stock levels are used for planning and sales. **BluInventory** is a collection of applications providing the means of keeping track of stock levels for different storage locations within an organization. Once installed Inventory-Link make use of totalised values from the control systems, stored within the InfoPlus.21 database, to determine what went in and out of a storage location. **BluInventory**

further more allows for characteristics to be configured for each storage location. Qualities, movement events are classified as characteristics making use of InfoPlus.21's flexibility to have more information about each of the storage locations. Configuring can be done using the InfoPlus.21 Administrator GUI or the AspenTech Process Explorer GUI provided with **BluInventory**. Once configured the same AspenTech Process Explorer GUI used for the



configuration is used to view and trend the storage location data, managed by **BluInventory**. The application also allows for surveyor corrections made to the stock levels. These surveyor entries are done using the same AspenTech Process Explorer GUI used for configuration and viewing of the storage locations.

Refer to Figure 1 for a typical view of the **BluInventory** GUI being used to configure and view the various inventory storage locations

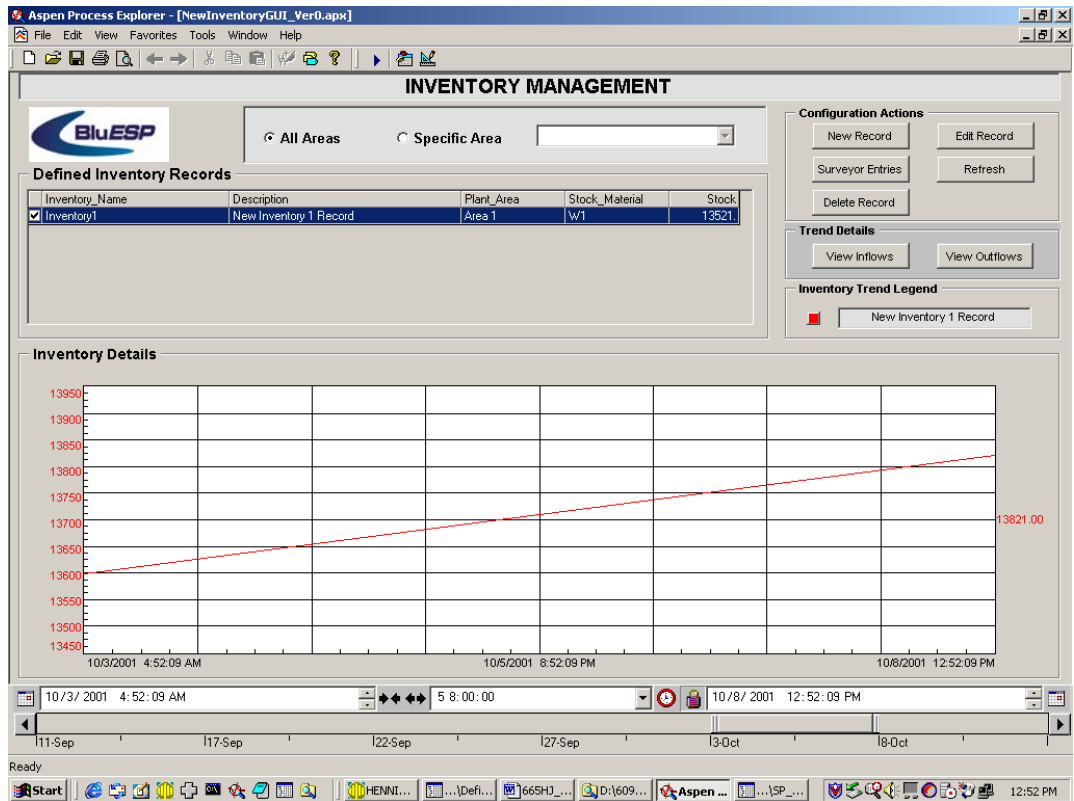


Figure 1

FEATURES

- Easy and quick to install
- Update time configurable
- Easy configuration
- Inventory trends part of provided AspenTech Process Explorer GUI
- Inflow trends part of the provided AspenTech Process Explorer GUI
- Outflow trends part of provided AspenTech Process Explorer GUI

SPECIFICATIONS

DATA BASIS

- The **BluInventory** application may be installed on a SETCIM, InfoPlus-X and a InfoPlus.21 real time database

FOR MORE INFORMATION

With complete solutions for applications and interfaces, BluESP (Pty) Ltd is prepared to serve your world wide needs. Call BluESP at +27-11-251-5900, or email our office at support@bluesp.co.za.

Alternatively visit our website at www.bluesp.co.za.