



APPLICATION DATA SHEET

BluEquip

DESCRIPTION

Your business need to manage all of its assets and operations effectively and productive to ensure an overall cost effective business. Equipment need to be monitored and serviced according certain ad-hoc and schedule conditions. Making use of the notifications and running hours the typical ERP system generate and maintain job cards to service the equipment as required. **BluEquip** is providing to equipment to ERP facility to automatically and electronically provide the notifications and running hours to the ERP system.

The **BluEquip** application is software using the power of the AspenTech InfoPlus.21 database to capture needed running hour information and notification information from plant control systems. Standard CIM-IO an interface sub-system of the AspenTech InfoPlus.21 is used to acquire the running hour from the control system. The **BluEquip** InfoPlus.21

database stores and manages the running hours and notifications from the control system according to the tag records and functional locations as setup in the ERP system.

The equipment records can be configured to have scheduled and/or change of state activation to calculate and upload the running hour and notifications to the ERP system. Total running or delta running hours can be uploaded to the ERP system using the Aspen Integration Infrastructure (AII) publish and subscribe technology.

Figure 1 shows a typical Process Explorer GUI used to configure and maintain the equipment records in the InfoPlus.21 database. The user interface also available in a web version can also be used to generate and initiate the upload of running hour and notification data.



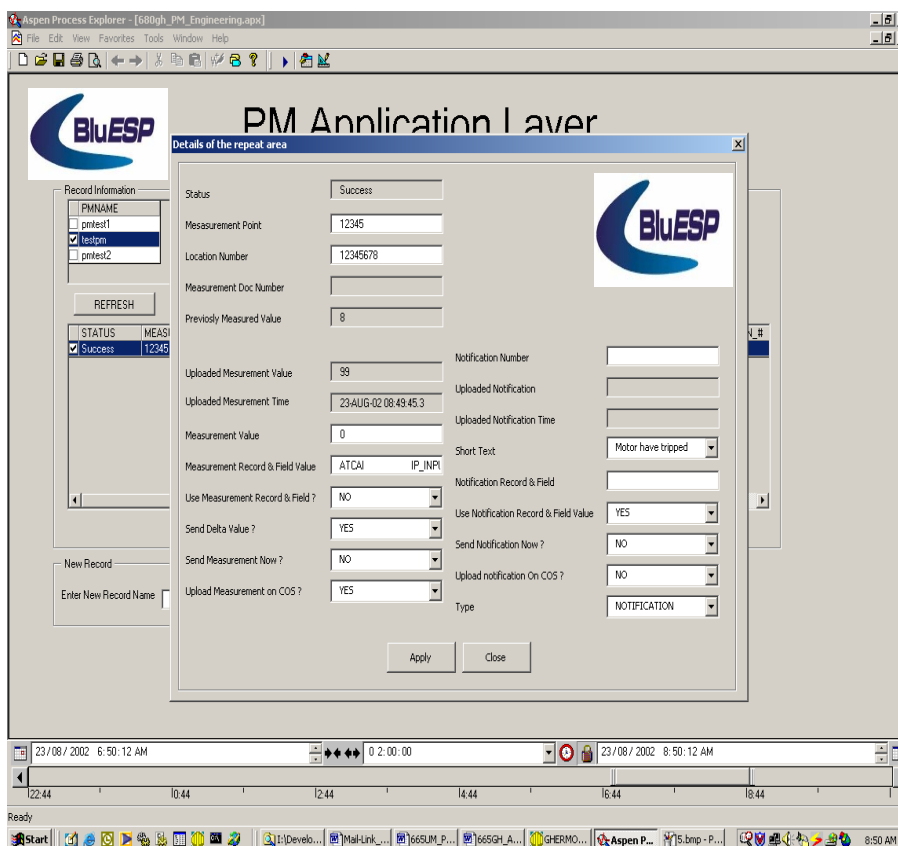


FIGURE 1

BENEFITS

BluEquip use standard AspenTech and custom build CIM-IO interfaces to retrieve data from the any plant control systems. Equipment data uploaded to the ERP system using the Publish and subscribe technology of AspenTech referred to as Aspen Integration Infrastructure (AII) Equipment data maintained in a central repository

FEATURES

- Fully configurable.
- Easy to use.
- Easy and quick to install and configure.
- It is an InfoPlus.21 database resident application, meaning that standard InfoPlus.21 functionality like alarming, reporting etc can be integrated and utilized along with the application.
- Utilises standard SAP R/3 RFC

FUNCTIONALITY

- The **BluEquip** application is divided into two main sections namely:
 - MES database engine
 - Web GUI
- The InfoPlus.21 Administrator can be used to configure the equipment tags and the **BluEquip** engine records
- Configurable to upload total or delta running hours to the ERP system
- On demand and scheduled upload of data to the ERP system

FOR MORE INFORMATION

With complete solutions for applications and interfaces, BluESP (Pty) Ltd is prepared to serve your worldwide needs. Call BluESP (Pty) Ltd at +27-11-251-5947, or email our office at support@bluesp.co.ca.